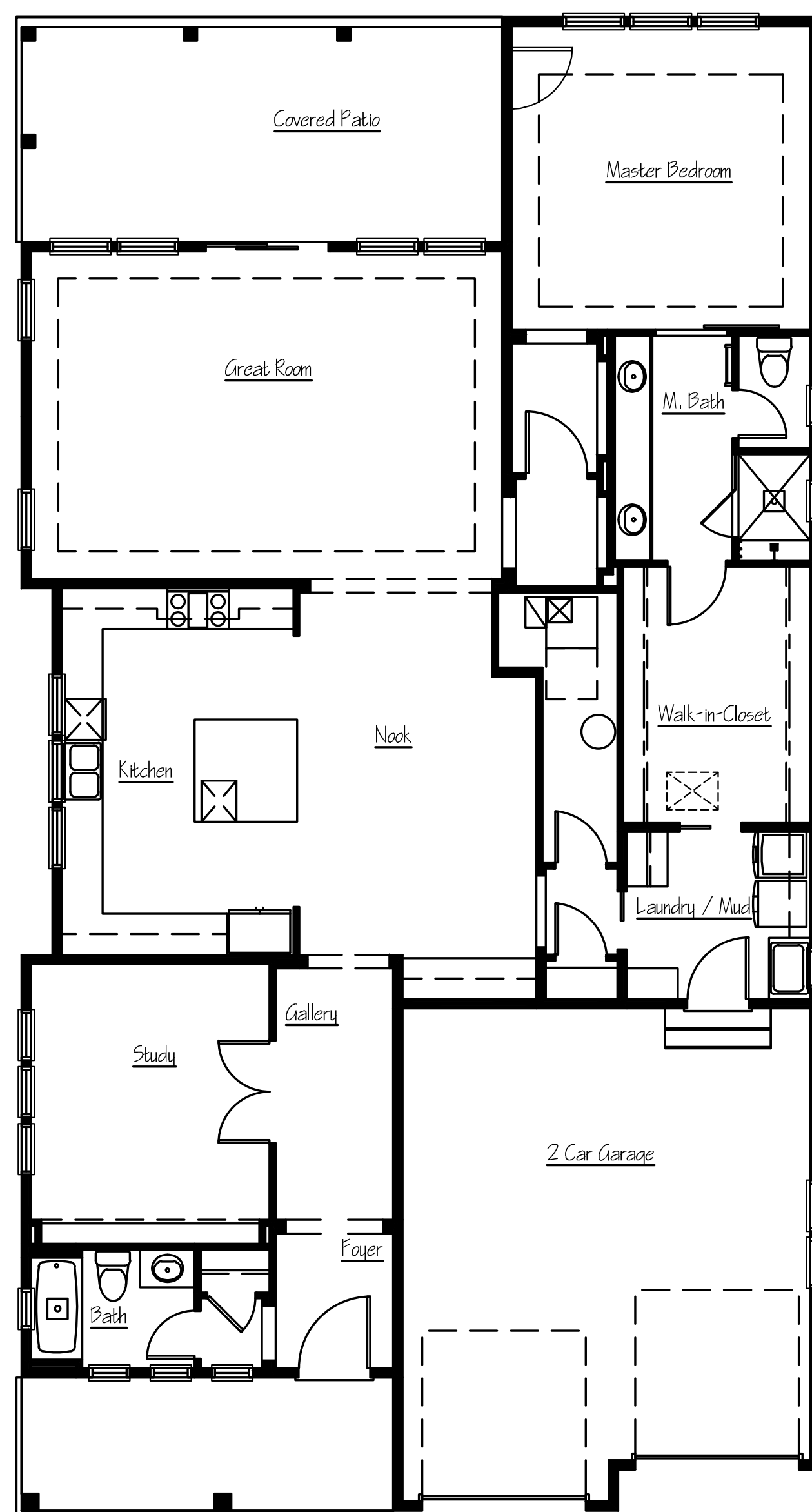
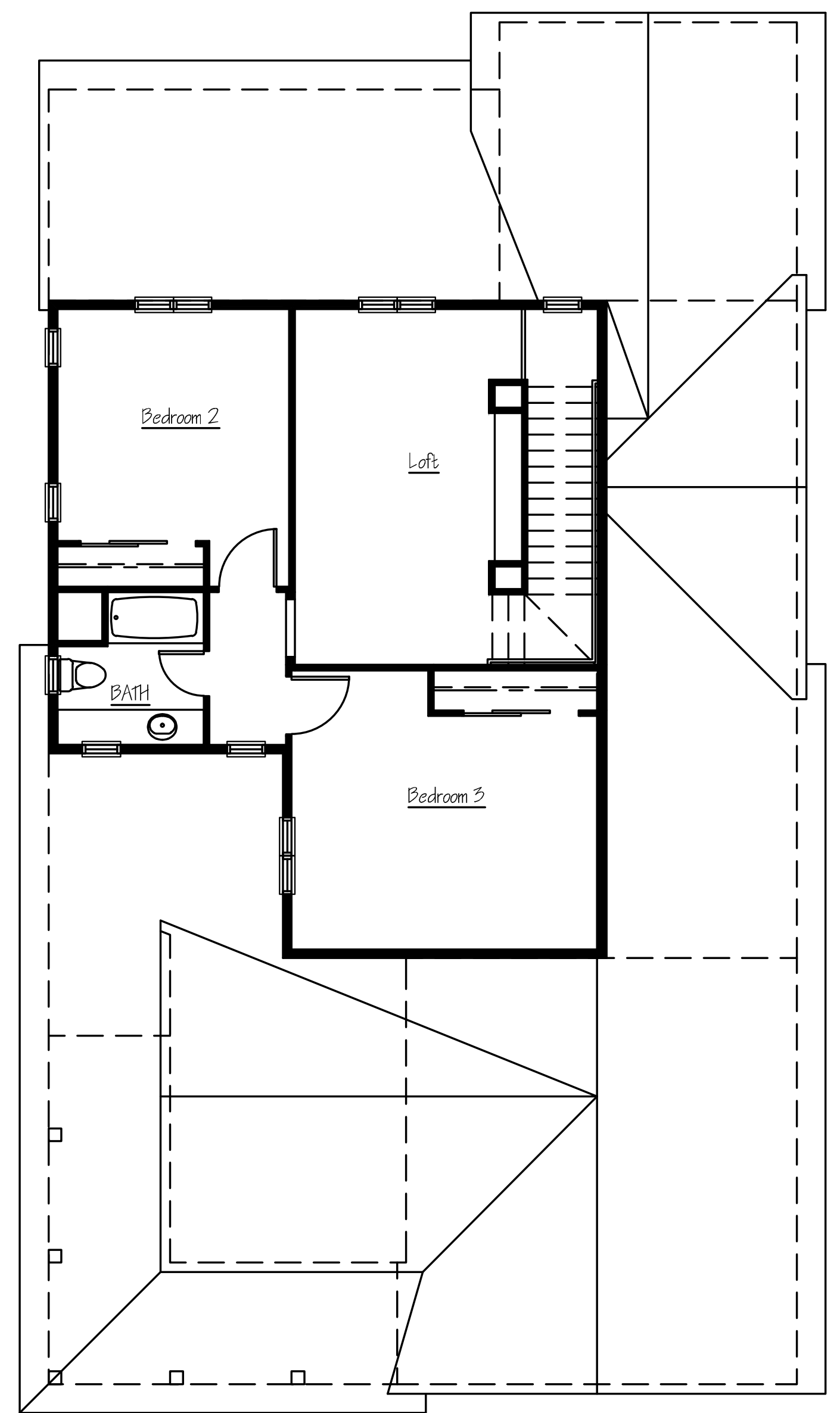




- Our largest home
- Large open great room
- Huge master walk-in closet
- Oversized laundry with direct access to master closet
- Covered front porch and expansive back patio
- Spacious open kitchen plan oriented to outdoor patio
- Contemporary stainless steel appliances
- Premium cabinets
- Nine foot ceilings throughout
- Hardwood flooring in entry, kitchen and dining room
- Optional conversion of study to bedroom 4
- Available in two elevation finishes ("B" elevation shown)



Main Floor



Upper Floor

## THE EVERLY

2918 SQ FT

3 BEDS

3 BATHS

+ STUDY OR OPTIONAL BEDROOM 4



Your small batch builder™