



6848 GROVETON AVENUE

CASTLEWOOD RANCH

THE REVERE

2565 SQ. FT.



## The Revere

2565 square feet

3 bedrooms

2.5 baths

Study (or 4th bedroom)

2-car garage

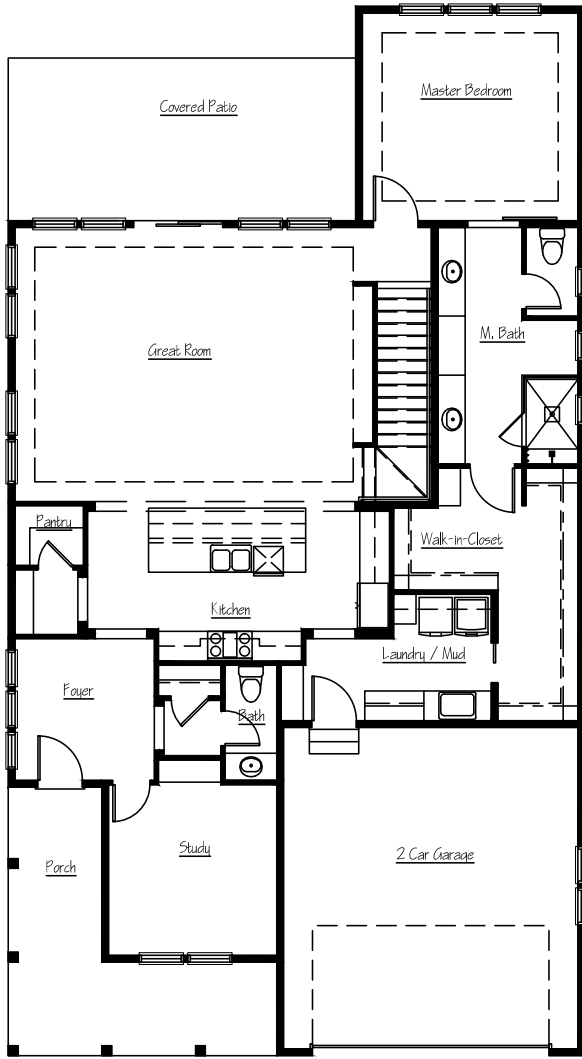
Non-basement

\$432,500

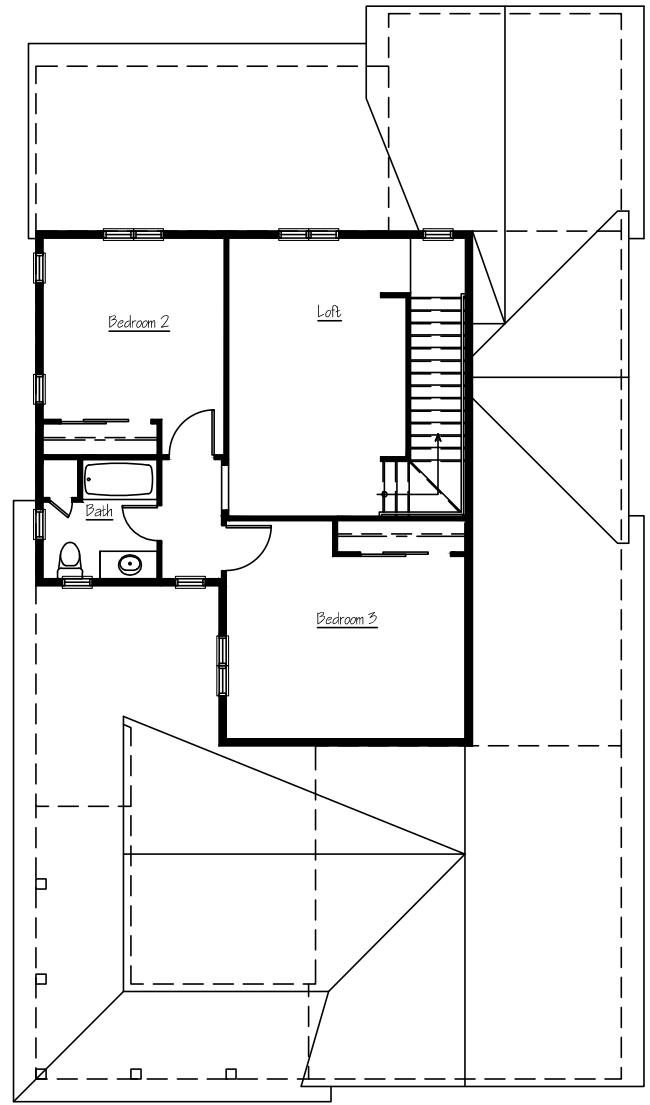


### THE REVERE IS LOADED WITH PREMIUM FEATURES:

- Casual living with large open great room
- Private owner's retreat with huge master closet
- Oversized laundry room with direct access to master closet
- Covered front porch and expansive back patio
- Spacious open kitchen plan
- Contemporary stainless steel appliances
- Premium cabinets
- Corian solid-surface countertops
- Nine foot ceilings throughout
- Optional stone fireplace
- Wide baseboard and door casings
- Hardwood flooring in entry, kitchen and dining room
- Energy efficient heating
- R21 exterior wall insulation
- Sturdy 2x6 exterior wall construction
- Full front yard landscape package
- Exclusive Adamo Home Warranty



Main Level



Upper Level

## The Revere

2565 square feet  
 3 bedrooms  
 2.5 baths  
 Study (or 4th bedroom)  
 2-car garage  
 Non-basement  
 \$432,500

**WHY SMALL BATCH?** If the tastiest artisan breads and beers are hand-crafted with passion and locally-sourced ingredients, why shouldn't your home be built that way too? Adamo Homes are built in small batches because it allows us to spend more time on the important details that make your home extra special. Our mission is to create an exceptional home-buying experience and deliver homes our customers truly love. Let's talk, and see how we can craft the perfect home for you.



COLORADO, USA

303.877.4980

BUILDADAMO.COM

*Your small batch builder*